

- active data warehouses (*ADW*), 327
- adaptive
 - data warehousing, 327
 - feature, 269
 - modeling, 282, 294
- additive generator, 239
- algebra
 - Heyting \sim , 239
 - MV-, 239
 - product \sim , 239
- algebraic
 - curve, 24
 - geometry, 17, 346
 - series, 35
- Algebraic Oil Project, 17
- algorithm
 - development, 148
 - synthesis, 71
- alternating quantifiers, 75
- Amdahl's law, 335
- AMMI*, 297
- analysis, elementary, 75
- analytical fault model, 265
- ant colony optimization, 135
- antennas, 15
- application
 - lifecycle management (*ALM*), 174
 - oriented research, 282
- architecture
 - analysis, 202
 - description language, 203, 204
 - design, 202
 - documentation, 203
 - evaluation, 202
 - implementation, 202
 - service-oriented, 212
 - software \sim , 200
 - unified shader \sim , 369
- artificial intelligence, 83
- assessment-based software process
 - improvement, 167
- atomic level process model, 167
- Austrian Grid, 334, 349
- automated
 - reasoning, 63, 65, 83, 342, 366
 - theorem proving, 17, 63, 64, 89
- BARROSO, MANUEL, 1
- benzenoid hydrocarbons, 12
- Beowulf systems, 337
- best parameter grid search, 247
- best practice software process model, 165
- bias
 - variance tradeoff, 247
 - error, 247
- binary
 - powering, 91
 - regression tree, 258
- BIRN*, 359
- bluetooth, 439, 441
- BOSTAN, ALIN, 35, 38
- bottom-up reuse, 176
- BOUSQUET-MELOU, MIREILLE, 35
- Buchberger
 - algorithm, 21
 - theorem, 20
- BUCHBERGER, BRUNO, 7, 10
- building block hypothesis, 119, 122
- business process reengineering, 295
- CAD*, 15, 79
- capability
 - dimension, 167
 - maturity model (*CMM*), 167
- CASA*, 346

- case based reasoning (*CBR*), 283, 321, 325, 326
- cellular genetic algorithm, 135
- center
 - of gravity, 240
 - of maximum, 240
- CERN*, 338, 361
- chromosome, 137
- classification, 143
 - graphical classifier analysis, 145
 - medical data analysis, 144
 - of lattice walk, 33–39
 - rate, 269
- cluster computing, 337, 343, 348
- co-located environment, 433
- coarse-grained parallelism, 340, 355
- code generation, 221
- coding theory, 3, 17
- coherence, 91, 92
- collaboration support, 175
- combinatorial
 - identity, 3, 17
 - optimization, 103, 128
 - machine scheduling problem, 132
 - quadratic assignment problem, 132
 - traveling salesman problem, 129
 - vehicle routing problem, 130
- comparison factor, 124
- CompFS*, 256
- compositional rule of inference, 239
- comprehensible model, 255
- computation, 69
- computational
 - intelligence, 334, 366
 - mathematics, 5, 8
- computer
 - assisted guessing, 6
 - algebra, 6, 16
 - parallel, 342, 346
 - mathematics, 10
- concept drift, 254
- concurrency, 333, 369
- confidence of classifier response, 245
- construction heuristic, 133, 135
- content management system, 292
- context
 - sequence matching, 87
 - unification, 87
 - variable, 87
- continuous software process improvement, 167
- control theory, 3, 17
- controller
 - Mamdani, 240
 - Sugeno, 241
 - Takagi-Sugeno, 240
- convergence to optimality, 251
- Cooperating Validity Checker Lite, 94
- cooperative tabu search, 136
- copy-and-modify, 176
- correctness, 92
 - partial, 90
 - total, 90
- creative telescoping, 43
- cross-validation, *N*-fold, 247
- crossover, 119, 127, 135
- cryptoanalysis, 17
- cryptographic code, 18
- cryptography, 3, 17
- CUDA*, 370, 371
- curve
 - offset \sim , 30
 - parametrizable, 25, 29
 - rational, 25
- cylindrical algebraic decomposition, 15
- dashboard, 195
- data
 - based modeling
 - classification, 143
 - genetic programming, 140
 - virtual sensor, 142
 - driven fuzzy system, 242
 - grid, 334, 358
 - mining, 199
 - mining agents, 146
 - parallelism, 340, 352, 369, 371
 - stream, 370
 - warehouse (*DWH*), 195, 283, 326
- database, 281, 319
- decision
 - support, 289
 - support system, 289–292
 - tree, 257
- defect, 186, 198
- definite summation, 43
- defuzzification, 239
- DESY, 41
- detection rate, 266
- Deutsches Elektronen Synchrotron, 41
- development
 - cost, 160
 - effectiveness, 160
 - efficiency, 160
 - schedule, 160
- DEXA*, 281
- DiamondTouch*, 436
- differential equation, 17

- digital
 - pen, 441, 450
 - surface, 464
 - whiteboard, 448, 460
- diophantine equation, 19, 30
- discrepancy norm, 271
- distributed
 - computing, 333, 343, 355
 - maple, 343
- divide and conquer, 72
- DLMF*, 14
- document management, 291
- domain
 - specific language, 214, 215
 - specific modeling, 214, 215, 295
 - framework, 217
 - horizontal, 214
 - modeling, 219
 - ontology, 283, 287, 288
 - vertical, 214
- DSM*
 - platform, 217
 - tool chain, 217
- DUECK, GUNTER, 10
- dynamics, 54
- DynamOnt*, 285, 286

- E-paper, 435
- E-recruitment, 306
- efficiency, 335, 354, 369
- electromagnetic wave simulation, 15
- elementary analysis, 75
- embedded feature selection, 245
- enabling grids for E-science (*EGEE*), 338, 350
- end-user programming, 223
- engineering
 - discipline, 175
 - strategy, 161, 181
 - assessment, 183
 - development, 183
- ensemble classifier, 269
- enterprise application integration, 211
- environment, co-located, 433
- equation, diophantine, 19, 30
- error
 - bias \sim , 247
 - variance \sim , 247
- evolution, 18
- evolutionary algorithms, 114
- evolving fuzzy system, 248
- eVQ*, 250
 - class, 251
- expansion, Laurent series, 45

- extensionality, 68
- extract transfer load (*ETL*), 326
- extraction domain ontology, 287, 288

- face-to-face meeting, 433
- facility layout problem, 132
- failing proof, 70
- false detection rate, 266
- fault
 - level, 266
 - tolerance, 346
- FAW, 2, 281, 333, 334, 349, 351, 362
- feature extraction, 268
- federation model, 362
- FEM*, 15
- Feynman
 - diagram, 40
 - integral, 40, 44, 47
- FIBONACCI, LEONARD, 12
- fine-grained parallelism, 340, 369
- finite element method, 15
- first order ordinary differential equation
 - general solution, 30
- fitness landscape characteristics, 105, 148
- flat
 - matching, 85
 - theory, 86
- FLEXFIS*, 250
- FLLL, 2, 237, 244, 250, 255, 273
- Flynn's taxonomy, 336
- focus windows, 69
- formal
 - program analysis, 96
 - verification, 89
- formula scheme, 70
- FS-LiRT*, 258
- FTIR*, 439, 456
- full-text search, 292
- function variable, 86
- functional programming, 88
- fuzzy
 - regression, by indicator matrix, 245
 - classifier, 245
 - logic, 199, 238, 366
 - predicate, 255
 - regression model, 245
 - regression tree, 257
 - set, 238
 - system, data driven, 242
 - system, evolving, 248
 - system, genetic, 243
- fuzzy set based linear regression tree, 258

- GALILEI, GALILEO, 49

- GATE*, 305, 307, 308, 313, 316
- GDES-Reuse* (project), 161, 175
- general purpose computing on GPUs, 367
- genetic
 - algorithm, 114, 118, 134, 135
 - diversity, 121, 122, 145
 - fuzzy system, 243
 - programming, 136, 137
 - bibliography, 138
 - chromosome representation, 137
 - data-based modeling, 140
 - structure tree, 137
- German V-Model, 165
- Gessel conjecture, 36–38
- GESSEL, IRA, 37
- gLite*, 352, 354
- global learning, 243
- Globus toolkit, 340, 352, 354
- Gödel
 - logic, 239
 - second theorem, 3
- golden ratio, 12
- Gosper algorithm, 8
- Gröbner bases, 3
 - method, 3
 - special semester, 16
 - strategy, 23
 - theory, 2, 3, 16
- GRÖBNER, WOLFGANG, 21
- gradual forgetting, 254
- graph
 - coloring, 21
 - theory, 17
- graphics
 - pipeline, 368
 - processing unit (*GPU*), 336, 366
- grid
 - enabled *SEE++*, 350
 - enabled semantic data access
 - middleware (*G-SDAM*), 353, 362
 - computing, 333, 337, 349
 - middleware, 340, 354, 355
- GriPhyN*, 359
- guess'n'prove paradigm, 35
- Gustafson's law, 335
- HARDY, G.H., 9
- harmonic sum, 47
- Hephaistos (project), 161, 173
- Hess-Lancaster test, 351
- heuristic optimization, 334
- HeuristicLab, 106, 149
- Heyting algebra, 239
- hierarchical model, 361
- high-performance computing, 333
- higher order predicate logic, 68
- HighLight* (project), 161, 170
- holonomic
 - paradigm, 13
 - series, 35
- horizontal display, 448
- hybrid
 - metaheuristics, 117
 - model, 362
- hypergeometric term, 41
- I1* heuristic, 133
- IDEAL* cycle, 169
- ill-posed learning problem, 247
- image
 - classification system, 267
 - classifier, 268
- imperative programming, 89
- improved fault detection, 265
- improvement heuristic, 133
- incremental learning, 249, 250, 269
- indefinite summation, 42
- indicator matrix
 - fuzzy regression by, 245
 - linear regression by, 245
- inductive learning, 257
- industrial
 - application, 210
 - engineering, 161, 175
 - solutions business, 181
- inequality, special function, 14
- information, 281
 - extraction, 287, 300, 301
 - extraction templates, 301
 - extraction tools, 304
 - retrieval, 301
 - system, 281
- infrared (*IR*), 454
- input-output
 - function, 240
 - space clustering, 243
- instruction level parallelism, 336, 368
- integration of product engineering and
 - lifecycle management, 173
- interactive
 - proving assistant, 93
 - tabletop, 444
- interpretable model, 242, 247, 255
- invariant theory, 3, 17
- inversion of a proper parametrization, 26
- I.Q. test, 11
- ISO 15504-7* cycle, 169
- ISO/IEC 12207*, 166

- isoefficiency concept, 335
- IT*
 - architectures, 295
 - infrastructure-library, 296
- iterated local search, 113
- iterative modeling process, 295

- JANSSEN, RAINER, 10
- Journal of Symbolic Computation (*JSC*), 7

- kernel
 - based method, 261
 - trick, 263
- kinematics, 52
- knowledge, 281
 - base, 68, 69, 281, 287
 - management system, 290–292
 - representation, 83
- KOUTSCHAN, CHRISTOPH, 15, 35, 37

- Lagrangian optimization problem, 262
- lattice path, 33–39
 - Gessel, 36–38
 - in 3D, 38–39
 - Manhattan, 33
- Laurent series expansion, 45
- law
 - Amdahl's, 335
 - Gustafson's, 335
 - Moore's, 333
- lazy thinking, 70
- learning
 - gain, 250
 - global, 243
 - ill-posed learning problem, 247
 - incremental, 249, 250, 269
 - inductive, 257
 - life-long, 254
 - local, 243
- left-hole context unification, 88
- life-long learning, 254
- lightweight software process improvement, 172
- linear
 - approximation, 16
 - boundary value problem, 17
 - regression by indicator matrix, 245
- linguistic label, 257
- local learning, 243
- logic
 - Lukasiewicz, 239
 - fuzzy, 238
 - Gödel, 239
 - mathematical, 64
 - product \sim , 239
- loop invariant, 18, 89
- Lukasiewicz
 - logic, 239
 - t-norm, 239

- machine
 - learning, 366
 - scheduling problem, 132
- magic triangle, 1
- MALLINGER, CHRISTIAN, 36
- Mamdani controller, 240
- manager/worker model, 341, 357
- many-core processor, 367–369
- Maple, 12
 - distributed, 343
- masking effect, 246
- massively parallel processing, 337, 367–369
- Mathematica, 11, 15, 67, 85, 86
- mathematical
 - chemistry, 12
 - discovery, 5
 - logic, 64
 - theory exploration, 65
- max-dot-inference, 240
- max-min-inference, 240
- max-prod-inference, 240
- measurement, 174
 - analysis, 325
- mediator, 365
- medical informatics, 334, 351
- membership function, 238
- message passing interface (*MPI*), 339, 356
- metadata, 359
- metaheuristics, 104, 107, 109
 - ant colony optimization, 135
 - evolutionary algorithms, 114
 - genetic algorithm, 114, 118, 134, 135
 - hybrid metaheuristics, 117
 - iterated local search, 113
 - population-based, 109
 - scatter search, 115
 - simulated annealing, 110, 124
 - tabu search, 111, 136
 - trajectory-based, 109
- metamodel, 216
- metamodeling, 295
- MISHNA, MARNI, 35
- mobile
 - device, 433
 - phone, 15
- model
 - analytical fault \sim , 265

- atomic level process \sim , 167
- checking, 342
- classification of data grids, 360
- comprehensible, 255
- defect prediction \sim , 199
- federation, 362
- hierarchical, 361
- hybrid, 362
- interpretable, 242, 247, 255
- monadic, 360
- plan-do-check-act (*PDCA*) \sim , 168
- process assessment \sim , 167
- process implementation \sim , 167
- process reference \sim , 167
- quality \sim , 186
- software quality \sim , 164
- transformation, 295
- universal level process \sim , 167
- waterfall development \sim , 165
- worldly level process \sim , 167
- modeling support process, 296
- monadic model, 360
- Moore's law, 333
- MPICH-G2*, 356
- MUC* conferences, 302
- multi
 - core processor, 333, 336, 367–369
 - objective optimization, 131, 136
 - product development, 161
 - sums, 44
 - threading, 339, 368, 369
 - touch, 439
 - user, 461
 - variate polynomial, 16
 - common roots, 16
 - model architecture, 245, 251
- multiple instruction multiple data, 336, 342
- MV-algebra, 239
- N*-fold cross-validation, 247
- named entity recognition (*NE*), 302
- natural language processing (*NLP*), 300
- NEES*, 360
- network weather service (*NWS*), 356
- NFC*, 439
- non
 - determinism, 342
 - dominated solutions, 132
 - linear polynomial systems, 16
- norm
 - discrepancy \sim , 271
 - triangular, 239
- NVO*, 360
- object recognition, 268
- occlusion problem, 447
- offset curve, 30
- offspring selection, 107, 123, 125, 135
- oil platform, 17
- OLED*, 435
- on-line
 - fault detection framework, 264
 - simulation framework, 269
- one-versus-rest classification, 245
- ontology, 282, 283, 362, 364
 - aware annotation, 317
 - based information extraction (*OBIE*), 287
 - driven extraction (*ODIE*), 288
 - domain \sim , 283, 287, 288
 - engineering methodology, 285
 - extraction domain \sim , 288
 - population, 287
 - upper-level \sim , 283
- open grid service architecture (*OGSA*), 340, 363, 366
- OpenMP*, 339
- operator's feedback, 269
- optimization
 - combinatorial, 103
 - heuristic, 334
 - multi-objective, 131, 136
 - post-, 259
- ordinal sum, 239
- orientation, 446
- origami, 17
- over-fitting, 247
- pair completion, 73
- parallel
 - computer algebra, 342, 346
 - computing, 333
 - computing in the grid, 355
 - functional programming, 338, 342, 345
 - programming, 338
 - symbolic computation, 342
- parallelism
 - coarse-grained, 340, 355
 - data \sim , 340, 352, 369, 371
 - fine-grained, 340, 369
 - task \sim , 340, 369
- parametrizable curve, 25
- parametrization
 - algorithm, 27
 - proper, 26
 - rational, 25
- parent selection, 141
- pareto dominance, 132

- particle physics, 40
- pathology fitting, 353
- pattern, 441
 - based programming, 88
- PCS* reasoner, 75, 80
- performance, 335, 367
- PHIDIAS, 12
- pick-and-drop, 465
- PILLWEIN, VERONIKA, 15
- pipelining, 336, 368
- piping system, 325
- plan-do-check-act (*PDCA*) model, 168
- planning, route \sim , 128
- plasticity-stability dilemma, 249, 251
- platform, 176
- polynomial
 - ideal theory, 17
 - invariant, 89
- population, 137
- post-optimization, 259
- predicate logic
 - higher order, 68
- predicate, fuzzy \sim , 255
- prefabricates, 176
- premature convergence, 121
- process, 160
 - assessment model, 167
 - capability, 161, 175
 - capability (continuous), 167
 - control, 160, 210
 - definition, 160
 - dimension, 167
 - evolution, 172
 - execution, 163
 - implementation model, 167
 - improvement, 160
 - improvement paradigm-cycle, 168
 - instantiation, 163
 - maturity (staged), 167
 - measurement, 160
 - modeling, 163
 - quality, 164
 - reference model, 167, 172
- processor
 - many-core, 368, 369
 - multi-core, 368, 369
- product
 - algebra, 239
 - characteristics prediction, 160
 - development, 173
 - family development, 161
 - lifecycle management, 161, 173
 - logic, 239
 - quality, 164
- profitability, 160
- program
 - definition, 91
 - formal analysis, 96
 - specification, 89, 91
 - transformation, 83
- ProgramExplorer*, 96
- programming
 - by contract, 91
 - functional, 88
 - genetic, 136
 - imperative, 89
 - parallel functional, 338, 345
 - pattern based, 88
- proof
 - failing \sim , 70
 - situation, 95
- ProofNavigator*, 94
- proper parametrization, 26
 - inversion of, 26
- Prove-Compute-Solve method, 75
- proving, 5
 - assistant, 93
 - highschool \sim , 70
 - quantifier free \sim , 70
 - rewrite \sim , 70
- push forward insertion heuristic, 133
- q*-class method, 53
- quadratic assignment problem, 132
- quality
 - assurance, 187
 - in use, 164
 - inspection, 271
- quantifier
 - alternating \sim , 75
 - elimination, 79
- quarter plane, 33–39
- rational
 - curve, 25
 - parametrization, 24, 25
 - series, 35
- reasoning, 63
 - automated, 63, 65, 83, 366
- recurrence
 - relation, 47
 - solving, 44
- recursive fuzzy weighted least squares, 251
- regression
 - model, fuzzy, 245
 - test, 326
- regularization, 259
 - parameter, 247

- Tikhonov \sim , 247
- relation, 69
- representation, 127, 134, 135, 137
 - knowledge-, 83
 - semantic, 65
- residuum, 239
- resonance, 49
 - nonlinear, 50, 52, 55
 - topological structure, 53
- resource description framework, 362, 364, 365
- reuse, 176
 - assessment, 161
 - best practice, 177
 - concepts, 176
 - improvement, 161, 177
 - maturity, 161, 175
 - paradigm, 161
 - top-down, 176
- rewrite proving, 70
- RFID*, 439
- RICAM, 8, 16
- rich client interface (web 2.0), 309
- RIPE, 2, 382, 422, 424
- RISC, 1, 2, 5, 8, 11, 13–16, 18, 35–37, 40, 41, 49, 55, 65, 83, 85, 87, 94–97, 282, 333, 334, 342, 346, 349, 350, 354, 355
- robotics, 3
- ROC* curve, 266
- route planning, 128
- routine decision tasks, 327
- rule
 - based information extraction, 305
 - evolution, 249
 - selection, 244
- S-polynomials, 3
- satisfiability modulo theories, 94
- savings heuristic, 133
- scalability, 335, 358
- scatter search, 115
- SCCH, 2, 159, 161, 237, 255, 282, 333, 366
- schema theorem, 119, 126
- scheme, formula \sim , 70
- screen scrapper, 304
- search engines, 301
- SEE++*, 350
- selection
 - offspring \sim , 107, 123, 125, 135
 - parent \sim , 128, 141
- semantic, 281
 - annotation, 287
 - data integration, 359, 362
 - network, 282, 289, 290, 292
 - representation, 65
 - web, 283
- SemWIQ* architecture, 362
- sequence
 - unification, 83, 85
 - variable, 83
- series
 - algebraic, 35
 - holonomic, 35
 - rational, 35
- set theory prover in *Theorema*, 81
- SFB* F013, 8, 57
- shared space, 443
- Sigma, summation package, 41
- significance of a cluster, 250
- similarity
 - measure, 322–324
 - query, 283, 319
- simulated annealing, 110, 124
- single
 - instruction multiple data, 336, 369
 - model architecture, 245, 251
 - program multiple data, 369
- SISB* (project), 161, 181
- SLOANE, NEIL, 14
- small and medium enterprise, 161, 170
- SOA* governance, 213
- soft margin, 263
- software
 - oriented *SMEs*, 171
 - architecture, 200
 - management, 204
 - tools, 204
 - cockpit, 195
 - development process, 160
 - development, spiral model, 165
 - embedded, 191
 - engineering, 17, 160
 - engineering best practices, 172
 - engineering discipline, 160
 - life cycle processes, 166
 - process, 159, 160, 163
 - automation, 163
 - business view, 160
 - capability, 167
 - engineering, 159, 161
 - engineering activities, 162
 - engineering benefit, 163
 - engineering key concepts, 162
 - engineering research challenge, 170
 - engineering research projects, 161
 - engineering system, 169
 - engineering view, 160
 - evaluation, 168

- improvement, 168, 170
- improvement action life cycle models, 168
- improvement benefit, 164
- improvement program life cycle models, 168
- line, 161, 172
- management, 160
- maturity, 167
- meta-models, 163
- model, 163
- model benefit, 163
- model classification, 166
- model line, 172
- model reuse, 163
- quality, 164
- standardization, 165
- product, 160, 163
 - development management challenge, 173
 - lifecycle, 173
 - line, 172
 - line approach, 161, 177
 - quality, 161, 164
 - quality requirements and evaluation, 164
- productization, 172
- quality, 185
 - model, 164
 - service, 160
 - testing, 188
 - work products, 160
- Softwarepark Hagenberg, 1–3, 11, 16
- solutions, non-dominated, 132
- sorting, 72
- SPARQL*, 362
- SparseFIS*, 244
- special function, 13
- Special Semester on Gröbner Bases, 16
- speedup, 335, 348, 353, 354, 372
- SPICE* project, 167
- strabismus, 351
- strategy, 160
 - corporate, 181
 - division, 181
 - functional, 181
 - object, 161, 181
- stream programming, 370, 372
- streaming, 467
 - multiprocessors, 368
- structural
 - health monitoring, 325
 - risk minimization, 262
- structure tree, 137
- sub-process, 160
- Sugeno controller, 241
- summation
 - definite, 43
 - indefinite, 42
 - principle, 41
- supercomputing, 333
- supply chain management, 315
- support vector machine, 262, 315, 371
- surface inspection, 269
- symbolic
 - computation, 5, 334
 - parallel, 342
 - execution, 89
 - summation, 40
- symmetric multiprocessing (*SMP*), 336
- syntax
 - abstract, 216
 - concrete, 216
- synthesis, 64
 - algorithm \sim , 71
- system
 - family approach, 176
 - identification, 140, 264
 - parameter identification, 140
 - structural identification, 140
 - theory, 3, 17
- T*-equivalence, 239, 261
- t-norm, 239
- table data extraction, 318
- tabu search, 111, 136
- Takagi-Sugeno controller, 240
- tangible
 - object, 439
 - palette, 451
- task parallelism, 340, 345, 369
- taxibus, 131
- telescoping, 42
- termination, 90
- termination condition, 89
- test
 - driven development, 191
 - automation, 189
 - management, 189
- texture analysis, 271, 371
- theorem proving
 - automated, 17, 63, 64, 89
- Theorema, 3, 11, 18, 65, 80, 342
 - command language, 68
 - formal text language, 68
 - formula language, 68
 - language, 67
 - user interface, 67

- theory exploration, mathematical, 65
- thread, 339, 368, 369
- Tikhonov regularization, 247
- time series analysis
 - Box-Jenkins approach, 141
 - Discover*, 282
 - topic map, 290, 292, 293
- topology-aware parallel programming, 356
- tourism web sites, 311
- traceability, 174
- traveling salesman problem, 129
 - circuit boards, 129
 - laser cutting, 129
- tree
 - binary regression \sim , 258
 - decision \sim , 257
 - fuzzy regression \sim , 257
 - fuzzy set based linear regression \sim , 258
 - structure \sim , 137
- triangular norm, 239
- TURING, ALAN, 10
- under-fitting, 247
- unification, 83
 - left-hole context, 88
 - Robinson \sim , 84
 - sequence \sim , 83, 85
 - syntactic, 83
 - word \sim , 87
- unified shader architecture, 369
- unit testing, 191
- universal level process model, 167
- unlearning effect, 254
- unstructured data, 300
- upper-level ontology, 283
- vague query language (*VQL*), 320
- vague query system (*VQS*), 320
- variance error, 247
- VCDECIS*, 291
- vehicle routing problem, 129, 130, 134
 - variants, 130
- verification, 64, 89, 342
 - condition, 89, 94
 - condition generator, 89, 91
 - completeness, 90
 - soundness, 90
 - of functional programs, 90
- version control, 174
- vertical display, 448
- very small enterprise (*VSE*), 161, 170
- vigilance parameter, 251
- virtual
 - sensor, 142
 - shared memory, 337
- visual reification, 296
- vocabulary, 364
- WALLIS, JOHN, 14
- waterfall development model, 165
- wavelet, 18
- web, 281, 300, 303, 311, 315
 - engineering, 281
 - information extraction, 282, 300
 - ontology language, 284, 362, 364, 365
 - page classification, 315
 - services, 212
 - structure analysis, 307, 316, 318
- weighted least squares, 247
- while loop, 89
- whiteboard, digital, 460
- WIMP*, 435
- word unification, 87
- workflow support, 174
- world wide web, 281, 300, 303, 311, 315
- worldly level process model, 167
- WWW*, 281, 300, 303, 311, 315
- WYSIWYG*, 296
- XML* data modeling, 83
- ZEILBERGER, DORON, 13, 35, 37
- ZF set theory, 81

List of Editors and Authors



Michael Affenzeller

Heuristic and Evolutionary Algorithms Laboratory
Upper Austria University of Applied Sciences
michael.affenzeller@fh-hagenberg.at

Wolfgang Beer

Software Competence Center Hagenberg (SCCH)
wolfgang.beer@scch.at



Andreas Beham

Heuristic and Evolutionary Algorithms Laboratory
Upper Austria University of Applied Sciences
andreas.beham@fh-hagenberg.at

Peter Brandl

Media Interaction Lab
Upper Austria University of Applied Sciences
peter.brandl@fh-hagenberg.at



Bruno Buchberger

Research Institute for Symbolic Computation (RISC)
Johannes Kepler University Linz (JKU)
bruno.buchberger@risc.jku.at

Georg Buchgeher

Software Competence Center Hagenberg (SCCH)
georg.buchgeher@scch.at



Christina Buttinger

Institute for Application Oriented Knowledge Processing (FAW)
Johannes Kepler University Linz (JKU)
cbuttinger@faw.jku.at

Károly Bósa

Research Institute for Symbolic Computation (RISC)
Johannes Kepler University Linz (JKU)
Karoly.Bosa@risc.jku.at





Bernhard Dorninger

Software Competence Center Hagenberg (SCCH)
 bernhard.dorninger@scch.at

Christina Feilmayr

Institute for Application Oriented Knowledge Processing (FAW)
 Johannes Kepler University Linz (JKU)
 cfeilmayr@faw.jku.at



Alois Ferscha

Department of Pervasive Computing
 Johannes Kepler University Linz (JKU)
 ferscha@soft.uni-linz.ac.at

Bernhard Freudenthaler

Institute for Application Oriented Knowledge Processing (FAW)
 Johannes Kepler University Linz (JKU)
 bfreudenthaler@faw.jku.at



Adam Gokcezade

Media Interaction Lab
 Upper Austria University of Applied Sciences
 adam.gokcezade@fh-hagenberg.at

Michael Guttenbrunner

Institute for Application Oriented Knowledge Processing (FAW)
 Johannes Kepler University Linz (JKU)
 mguttenbrunner@faw.jku.at



Michael Haller

Media Interaction Lab
 Upper Austria University of Applied Sciences
 haller@fh-hagenberg.at

Christian Hawel

Software Competence Center Hagenberg (SCCH)
 christian.hawel@scch.at



Johannes Himmelbauer

Software Competence Center Hagenberg (SCCH)
 johannes.himmelbauer@scch.at

Melanie Himsl

Institute for Application Oriented Knowledge Processing (FAW)
 Johannes Kepler University Linz (JKU)
 mhimsl@faw.at



Daniel Jabornig

Institute for Application Oriented Knowledge Processing (FAW)
 Johannes Kepler University Linz (JKU)
 djabornig@faw.at

Tudor Jebelean

Research Institute for Symbolic Computation (RISC)
 Johannes Kepler University Linz (JKU)
 Tudor.Jebelean@risc.jku.at

**Lena Kartashova**

Research Institute for Symbolic Computation (RISC)
 Johannes Kepler University Linz (JKU)
 Lena.Kartashova@risc.uni-linz.ac.at

Manuel Kauers

Research Institute for Symbolic Computation (RISC)
 Johannes Kepler University Linz (JKU)
 Manuel.Kauers@risc.uni-linz.ac.at

**Erich Peter Klement**

Dept. of Knowledge-Based Mathematical Systems, Fuzzy Logic Laboratory Linz-Hagenberg (FLLL), Johannes Kepler University (JKU)
 ep.klement@jku.at

Monika Kofler

Heuristic and Evolutionary Algorithms Laboratory
 Upper Austria University of Applied Sciences
 monika.kofler@fh-hagenberg.at

**Gabriel Kronberger**

Heuristic and Evolutionary Algorithms Laboratory
 Upper Austria University of Applied Sciences
 gabriel.kronberger@fh-hagenberg.at

Temur Kutsia

Research Institute for Symbolic Computation (RISC)
 Johannes Kepler University Linz (JKU)
 Temur.Kutsia@risc.jku.at

**Josef Küng**

Institute for Application Oriented Knowledge Processing (FAW)
 Johannes Kepler University Linz (JKU)
 jkueng@faw.jku.at

Andreas Langegger

Institute for Application Oriented Knowledge Processing (FAW)
 Johannes Kepler University Linz (JKU)
 Andreas.Langegger@jku.at

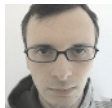
**Daniel Leithinger**

Media Lab
 Massachusetts Institute of Technology (MIT), USA
 daniell@mit.edu

Werner Leithner

Institute for Application Oriented Knowledge Processing (FAW)
 Johannes Kepler University Linz (JKU)
 wleithner@faw.at





Jakob Leitner

Media Interaction Lab
Upper Austria University of Applied Sciences
jakob.leitner@fh-hagenberg.at

Thomas Leitner

Institute for Application Oriented Knowledge Processing (FAW)
Johannes Kepler University Linz (JKU)
Thomas.Leitner@jku.at



Edwin Lughofer

Dept. of Knowledge-Based Mathematical Systems, Fuzzy Logic Laboratory Linz-Hagenberg (FLLL), Johannes Kepler University (JKU)
edwin.lughofer@jku.at

Bernhard Moser

Software Competence Center Hagenberg (SCCH)
Bernhard.Moser@scch.at



Stefan Parzer

Institute for Application Oriented Knowledge Processing (FAW)
Johannes Kepler University Linz (JKU)
sparzer@faw.jku.at

Peter Paule

Research Institute for Symbolic Computation (RISC)
Johannes Kepler University Linz (JKU)
Peter.Paule@risc.uni-linz.ac.at



Josef Pichler

Software Competence Center Hagenberg (SCCH)
josef.pichler@scch.at

Gustav Pomberger

Institute of Business Informatics – Software Engineering
Johannes Kepler University Linz (JKU)
gustav.pomberger@jku.at



Nikolaaj Popov

Research Institute for Symbolic Computation (RISC)
Johannes Kepler University Linz (JKU)
Nikolaaj.Popov@risc.jku.at

Herbert Prähofer

Institute for System Software
Johannes Kepler University Linz (JKU)
herbert.praehofer@jku.at

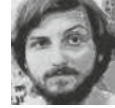


Birgit Pröll

Institute for Application Oriented Knowledge Processing (FAW)
Johannes Kepler University Linz (JKU)
bproell@faw.jku.at

Szilárd Páll

Software Competence Center Hagenberg (SCCH)
 Pall.Szilard@gmail.com

**Rudolf Ramler**

Software Competence Center Hagenberg (SCCH)
 rudolf.ramler@scch.at

Christoph Richter

Research Group Knowledge Media
 Upper Austria University of Applied Sciences
 christoph.richter@fh-hagenberg.at

**Carsten Schneider**

Research Institute for Symbolic Computation (RISC)
 Johannes Kepler University Linz (JKU)
 Carsten.Schneider@risc.uni-linz.ac.at

Wolfgang Schreiner

Research Institute for Symbolic Computation (RISC)
 Johannes Kepler University Linz (JKU)
 Wolfgang.Schreiner@risc.jku.at

**Thomas Seifried**

Media Interaction Lab
 Upper Austria University of Applied Sciences
 thomas.seifried@fh-hagenberg.at

Fritz Stallinger

Software Competence Center Hagenberg (SCCH)
 fritz.stallinger@scch.at

**Robert Stubenrauch**

Softwarepark Hagenberg
 stubenrauch@softwarepark-hagenberg.com

Reinhard Stumptner

Institute for Application Oriented Knowledge Processing (FAW)
 Johannes Kepler University Linz (JKU)
 rstumptner@faw.jku.at

**Roland Wagner**

Institute for Application Oriented Knowledge Processing (FAW)
 Johannes Kepler University Linz (JKU)
 rwagner@faw.jku.at

Stefan A. Wagner

Heuristic and Evolutionary Algorithms Laboratory
 Upper Austria University of Applied Sciences
 stefan.wagner@fh-hagenberg.at





Stefan Wagner

Institute for Application Oriented Knowledge Processing (FAW)
 Johannes Kepler University Linz (JKU)
swagner@faw.at

Rainer Weinreich

Institute of Business Informatics – Software Engineering
 Johannes Kepler University Linz (JKU)
rainer.weinreich@jku.at



Gerhard Weiss

Software Competence Center Hagenberg (SCCH)
gerhard.weiss@scch.at

Volkmar Wieser

Software Competence Center Hagenberg (SCCH)
Volkmar.Wieser@scch.at



Wolfgang Windsteiger

Research Institute for Symbolic Computation (RISC)
 Johannes Kepler University Linz (JKU)
Wolfgang.Windsteiger@risc.jku.at

Franz Winkler

Research Institute for Symbolic Computation (RISC)
 Johannes Kepler University Linz (JKU)
Franz.Winkler@risc.uni-linz.ac.at



Stephan Winkler

Heuristic and Evolutionary Algorithms Laboratory
 Upper Austria University of Applied Sciences
stephan.winkler@fh-hagenberg.at

Wolfram WöB

Institute for Application Oriented Knowledge Processing (FAW)
 Johannes Kepler University Linz (JKU)
Wolfram.Woess@jku.at

